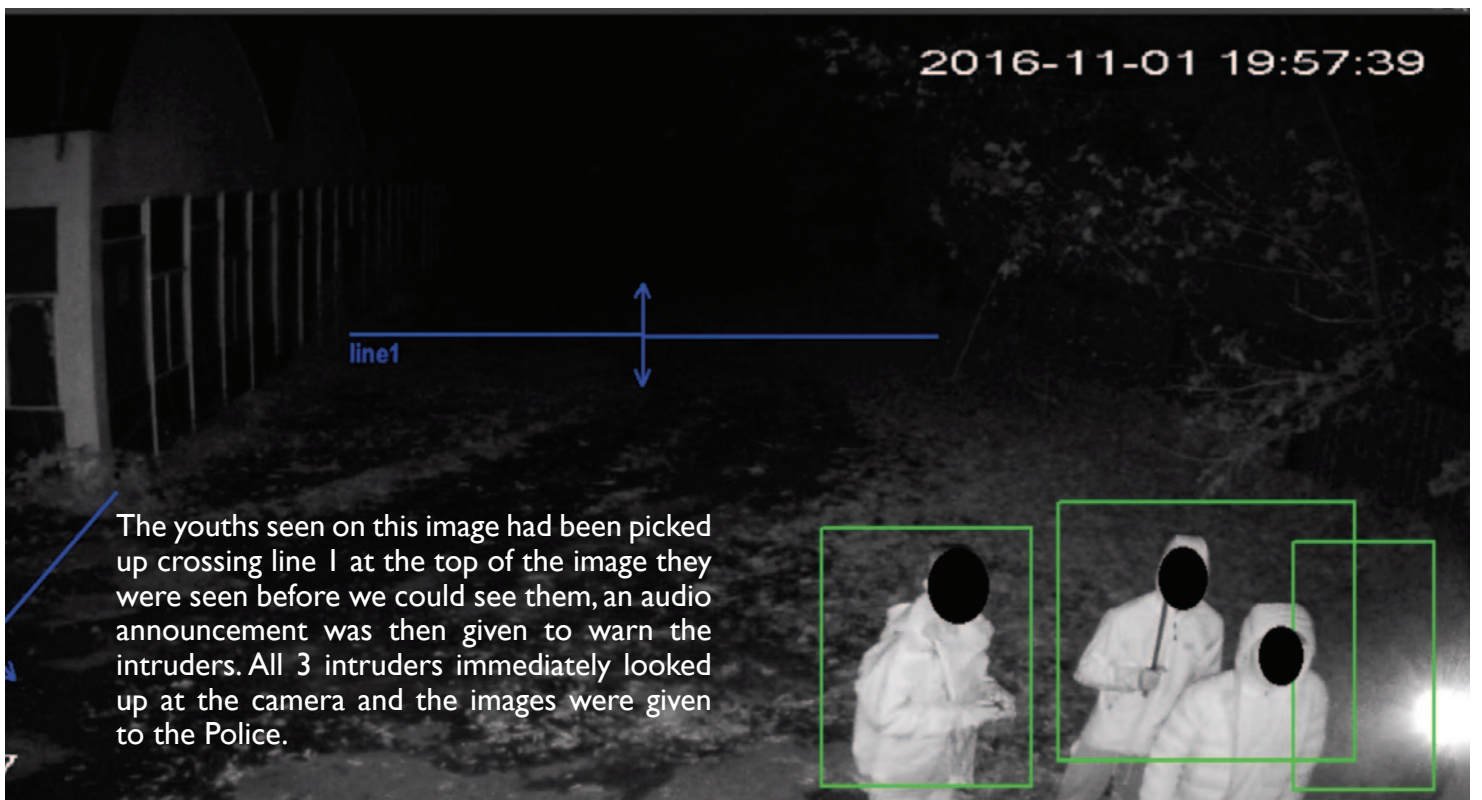




Oculus CCTV use the latest in technology to create a virtual perimeter around your Site/Property using Tripwire lines as seen in the image above (Shown in blue). The Software we use will detect human and vehicle activity and a green box will then form around the object in hand (as seen above). The above image shows our system picking up the Digger (vehicle) and a male working in a trench at the right of the digger. Once this object crosses a Tripwire, which we draw on each camera, this will create an alarm that gives 2 opportunities to pick up the intruders. This style of detection is much more effective than using the old PIR detection because;

- Whatever the camera can see it can protect.
- If the camera has to be moved on site temporarily we can realign remotely until an Oculus Engineer can attend to set it up with a walk test.
- The analytics work in the lowest of light, it will pick up any movement made in the area before the human eye can detect. This gives the monitoring station an advantage. The detected motion is highlighted with a green box, as shown in the image below.
- It reduces cabling and installation time.



The youths seen on this image had been picked up crossing line 1 at the top of the image they were seen before we could see them, an audio announcement was then given to warn the intruders. All 3 intruders immediately looked up at the camera and the images were given to the Police.